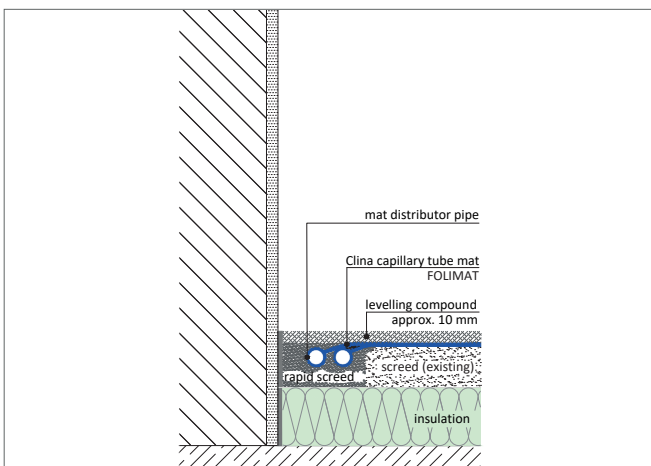


FLOOR HEATING ONTO SCREED

with capillary tube mat FOLIMAT FSB 20.00



System data sheet



CLINA - BETTER HEATING AND COOLING

FLOOR HEATING ONTO SCREED

with capillary tube mat FOLIMAT FSB 20.00



System data sheet

DESCRIPTION

- the capillary tube mats type FOLIMAT are available in the widths 300 and 600 mm; if necessary they can be individually adjusted in length at the construction site
- they are laid over the entire surface of the existing screed and fixed with tile adhesive; a primer must be applied beforehand
- mat distributor pipes and supply lines are placed in the screed; for this purpose, slots are made in the existing screed and then closed again (with concrete screed/rapid screed)
- the capillary tube mats, welded together to a hydraulic circuit, are connected to the supply and return lines and to a centrally located manifold
- the connection of the capillary tube mats to each other as well as the connection to the supply and return lines are made by means of heating element socket welding
- the leak test in accordance with the factory guidelines is carried out before closing the slots and applying the levelling compound; the test pressure is maintained during installation
- the temperature can be controlled room-by-room

ADVANTAGES

Low installation height

A layer thickness of 8-10 mm is sufficient. Mat distributor pipes and supply lines are accommodated in the existing screed.

Ideal for renovations

Thin-layer underfloor heating can be installed directly on an existing screed.

Short construction times

Due to the short drying time of the levelling compound, the surface can be walked on and is ready for installation after just a few hours.

High performance - high dynamics

Thanks to the small distance of the capillary tubes of 20 mm, the floor is heated homogeneously. As a result of this and due to the position of the capillary tube mats close to the surface a high heat output at low system temperatures can be achieved. This results in extremely short warm-up times. Just a few minutes after switching on the heating, you can feel the warmth on the entire floor.

Environmentally friendly and energy efficient

Very low system temperatures and extremely short warm-up times save money and protect the environment.

TECHNICAL DATA



HEATING CAPACITY

100 W/m²
according to characteristic curve
for underfloor heating



COOLING CAPACITY

30 W/m² recommended



ACOUSTICS

depending on
floor covering

INSTALLATION HEIGHT:

8-10 mm in levelling compound plus floor covering
(mat distributor pipes and supply lines in the existing screed)

SYSTEM WEIGHT (filled with water):

1020 g/m² plus levelling compound and floor covering

Component	Material	Dimensions	Other
CAPILLARY TUBE MAT IN PERFORATED INSERT FOIL	capillary tube mat: polypropylene (PP-R), recyclable insert foil: polystyrene	mat distributor pipe: 20 x 2,0 mm capillary tube: 4,3 x 0,8 mm distance of the capillaries: 20 mm length: 600-6000 mm width: 300 mm/600 mm	designation: FOLIMAT FSB 20.00 weight (incl. water): 1020 g/m ² open mat distributor pipes pressure stage: PN 10
PRIMER	depending on substrate		in the system tested products of the company Bostik are used
ADHESIVE	flex tile adhesive		in the system tested products of the company Bostik are used toothed spatula: 6-8 mm
LEVELLING COMPOUND	depending on structure	height: 8-10 mm	in the system tested products of the company Bostik are used
SUPPLY AND RETURN LINES	polypropylene (PP-R), recyclable	DN 15 (PP 20 x 2,0 mm)	connection alternating according to Tichelmann principle

CONTACT

Clina Heiz- und Kühlelemente GmbH
Eichhorster Weg 80 | 13435 Berlin

Fon: + 49 30 402054 – 0
Fax: + 49 30 402054 – 19

www.clina.de
info@clina.de